



CUSTOMER:

Customer Name: ALINVEST

PROJECT:

Project Code: E2558

Project Name: ALFAGEN

DOCUMENT INFORMATION:



Document Title: Basic Control System Configuration

Customer File Name: 2558-0000-GEN-E-DWG-BNCD

Customer Revision Number: B

Customer File Name: -

Contractor Revision Number: -

						CONTRACTOR		CONTRACTOR dwg number	Rev. B	Project Code E2558	Project Name ALFAGEN				
								2558-0000-GEN-E-DWG-BNCD		Document Title Basic Automation Architecture			Scale 1:1		
A	16/07/2025	INITIAL VERSION			RORI			RORI		RORI	CLIENT		Rev. -	CLIENT dwg number -	
Rev.	Date	Revisions description			Designed	Draw	Approved		DATE: 23/07/2025			DATE: 03/12/2025		DATE: 03/12/2025	Sheet 1 OF 21
1															

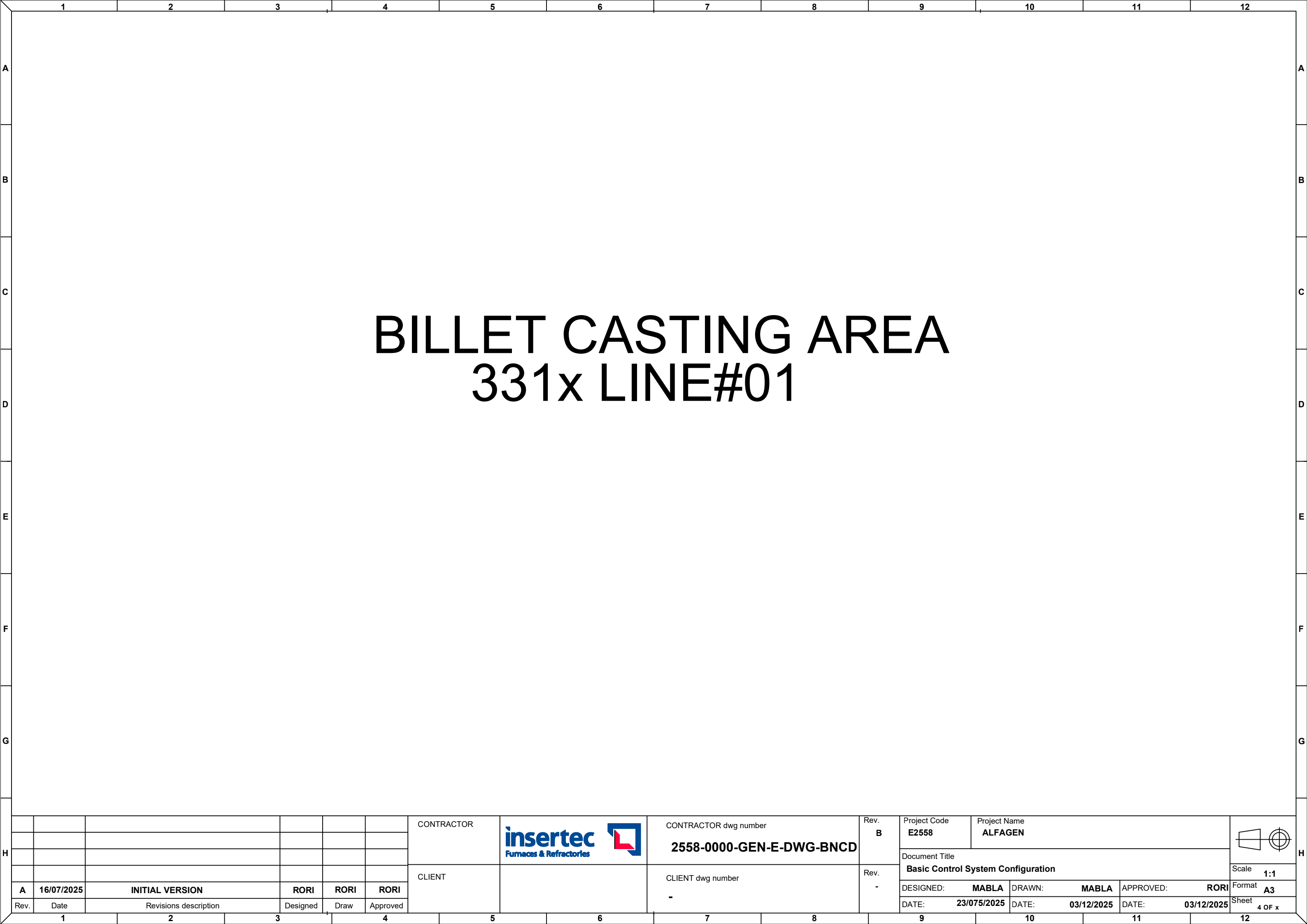





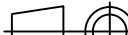




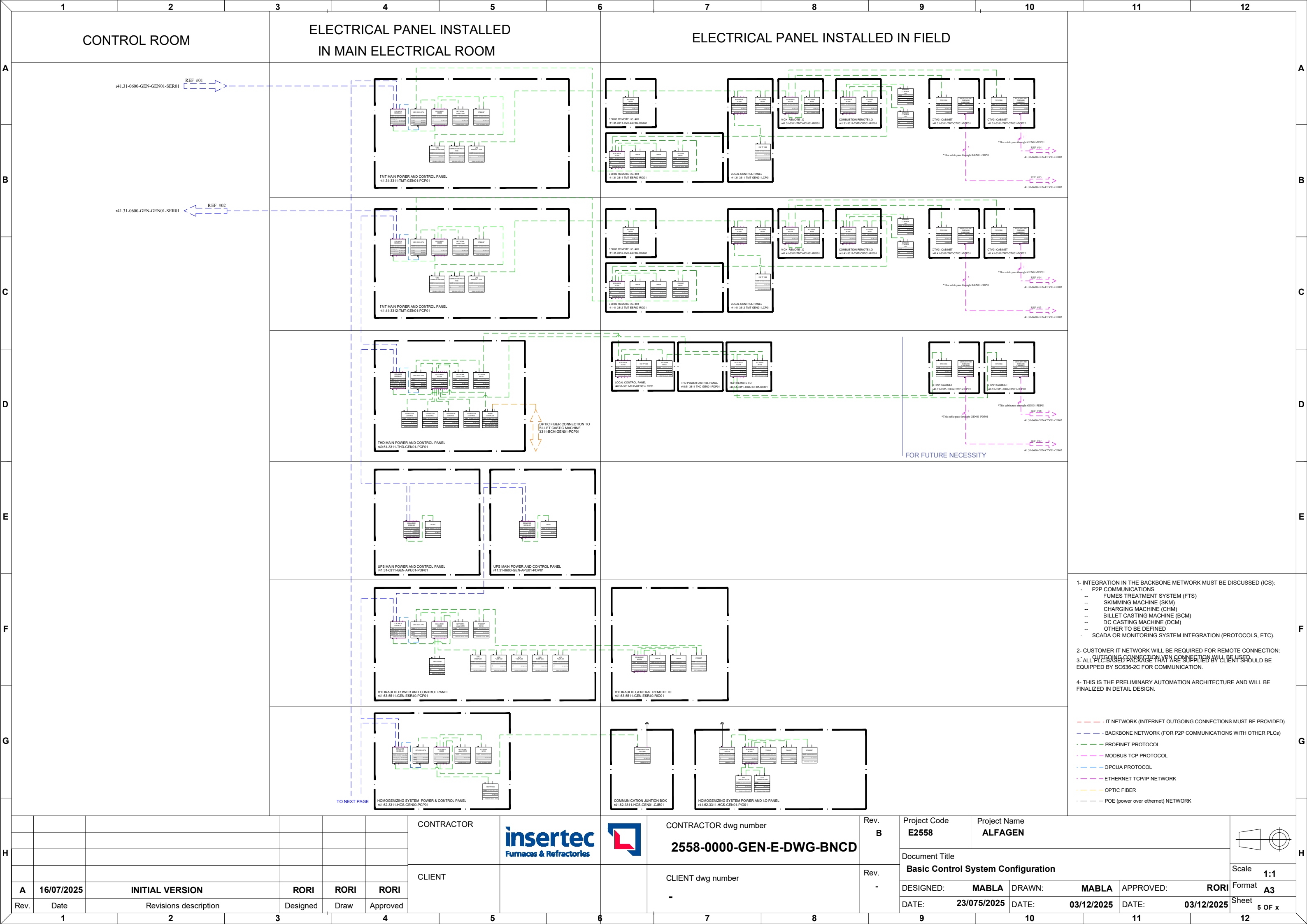




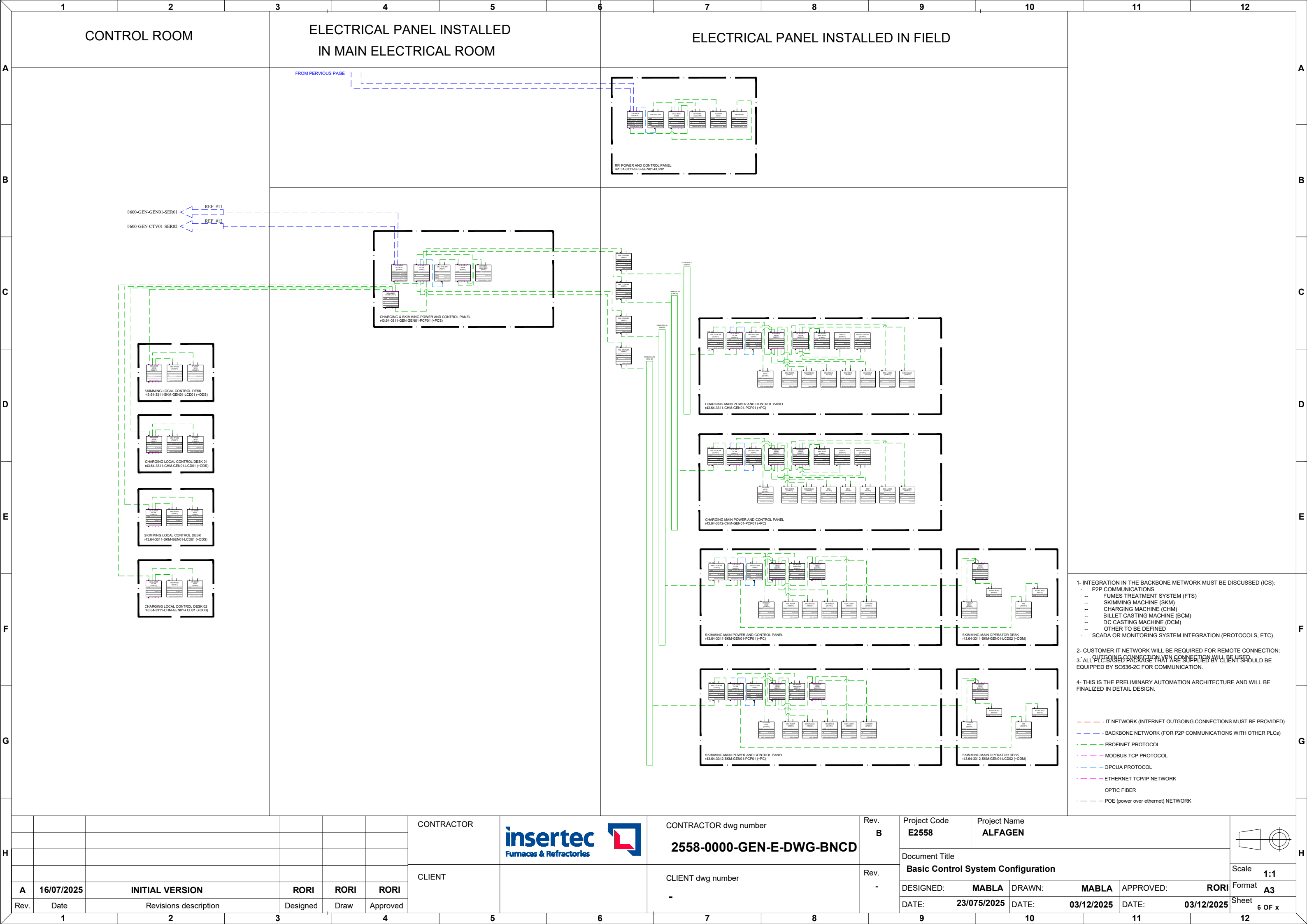
BILLET CASTING AREA  
331x LINE#01

H							CONTRACTOR		CONTRACTOR dwg number <b>2558-0000-GEN-E-DWG-BNCD</b>	Rev. <b>B</b>	Project Code <b>E2558</b>	Project Name <b>ALFAGEN</b>		H	
										Document Title <b>Basic Control System Configuration</b>		Scale <b>1:1</b>			
	<b>A</b>	<b>16/07/2025</b>	<b>INITIAL VERSION</b>	<b>RORI</b>	<b>RORI</b>	<b>RORI</b>	CLIENT		CLIENT dwg number <b>-</b>	Rev. <b>-</b>	DESIGNED: <b>MABLA</b>	DRAWN: <b>MABLA</b>	APPROVED: <b>RORI</b>		Format <b>A3</b>
	Rev.	Date	Revisions description	Designed	Draw	Approved					DATE: <b>23/075/2025</b>	DATE: <b>03/12/2025</b>	DATE: <b>03/12/2025</b>		Sheet <b>4 OF x</b>
	<b>1</b>	<b>2</b>	<b>3</b>	<b>4</b>		<b>5</b>	<b>6</b>	<b>7</b>	<b>8</b>	<b>9</b>	<b>10</b>	<b>11</b>	<b>12</b>		











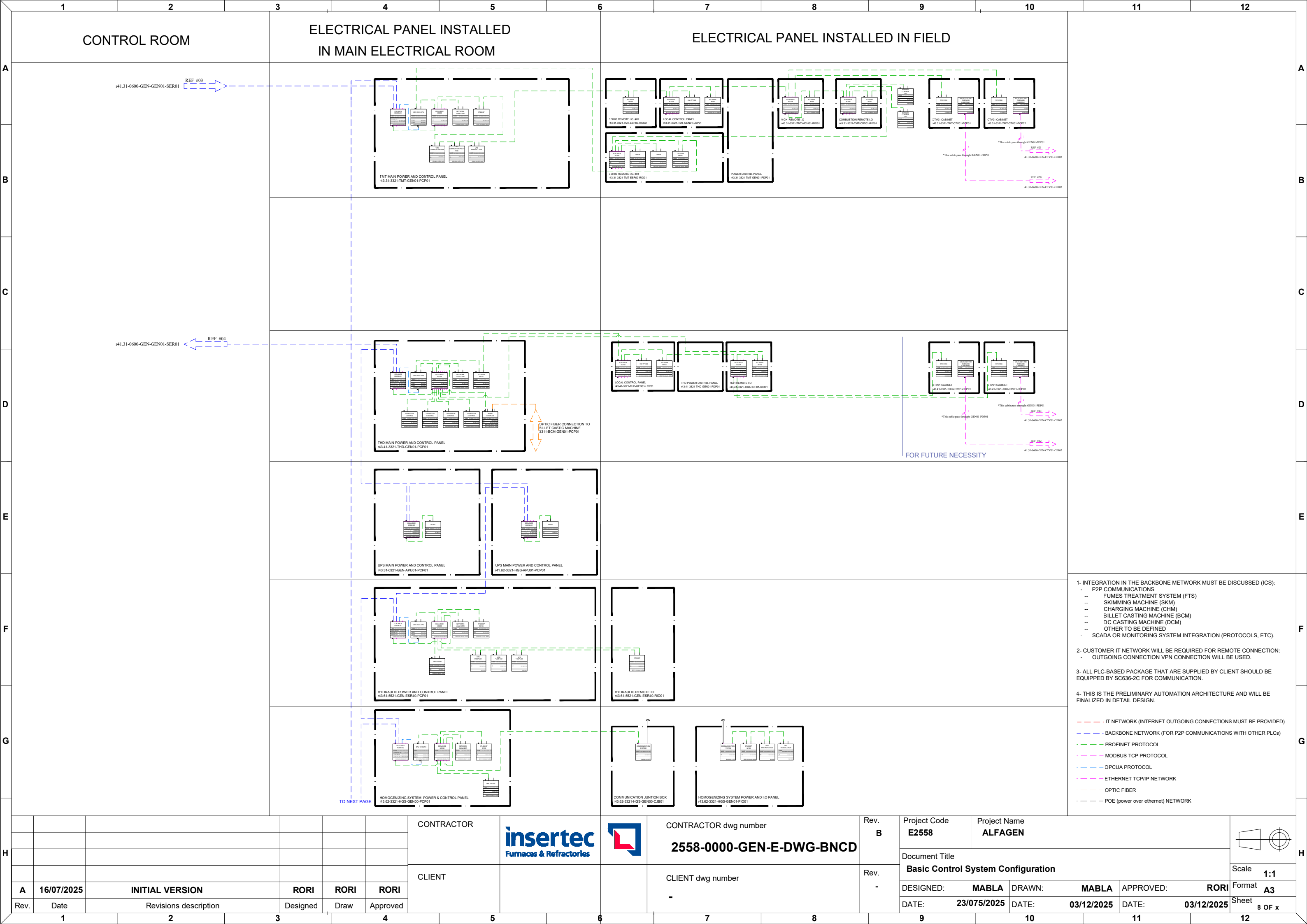
STRIP CASTING AREA  
3321 LINE#01

Rev.	Date	Revisions description	Designed	Draw	Approved
A	16/07/2025	INITIAL VERSION	RORI	RORI	RORI

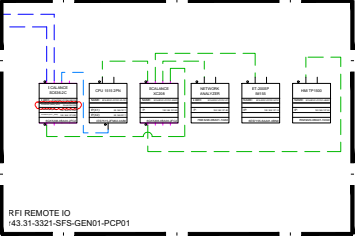

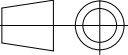
Rev.	Project Code	Project Name	Document Title	Scale	Format
B	E2558	ALFAGEN	Basic Control System Configuration	1:1	A3

Rev.	Project Code	Project Name	Document Title	Scale	Format
-	23/075/2025	03/12/2025	03/12/2025	7 OF x	







	1	2	3	4	5	6	7	8	9	10	11	12								
A	CONTROL ROOM			ELECTRICAL PANEL INSTALLED IN MAIN ELECTRICAL ROOM			ELECTRICAL PANEL INSTALLED IN FIELD													
B				<div>FROM PERVIOUS PAGE</div>  <div>RPI REMOTE IO 45.31-3321-SF5-GEN01-PCP01</div>																
C																				
D																				
E																				
F																				
G				<div>1- INTEGRATION IN THE BACKBONE NETWORK MUST BE DISCUSSED (ICS):<ul style="list-style-type: none"><li>- P2P COMMUNICATIONS<ul style="list-style-type: none"><li>-- FUMES TREATMENT SYSTEM (FTS)</li><li>-- SKIMMING MACHINE (SKM)</li><li>-- CHARGING MACHINE (CHM)</li><li>-- BILLET CASTING MACHINE (BCM)</li><li>-- DC CASTING MACHINE (DCM)</li><li>-- OTHER TO BE DEFINED</li></ul></li><li>- SCADA OR MONITORING SYSTEM INTEGRATION (PROTOCOLS, ETC).</li></ul></div> <div>2- CUSTOMER IT NETWORK WILL BE REQUIRED FOR REMOTE CONNECTION: OUTGOING CONNECTION VPN CONNECTION WILL BE USED.</div> <div>3- ALL PLC-BASED PACKAGE THAT ARE SUPPLIED BY CLIENT SHOULD BE EQUIPPED BY SC636-2C FOR COMMUNICATION.</div> <div>4- THIS IS THE PRELIMINARY AUTOMATION ARCHITECTURE AND WILL BE FINALIZED IN DETAIL DESIGN.</div> <div><div>-- -- - IT NETWORK (INTERNET OUTGOING CONNECTIONS MUST BE PROVIDED)</div><div>-- -- - BACKBONE NETWORK (FOR P2P COMMUNICATIONS WITH OTHER PLCs)</div><div>-- -- - PROFINET PROTOCOL</div><div>-- -- - MODBUS TCP PROTOCOL</div><div>-- -- - OPCUA PROTOCOL</div><div>-- -- - ETHERNET TCP/IP NETWORK</div><div>-- -- - OPTIC FIBER</div><div>-- -- - POE (power over ethernet) NETWORK</div></div>																
H							CONTRACTOR				CONTRACTOR dwg number <b>2558-0000-GEN-E-DWG-BNCD</b>		Rev. <b>B</b>	Project Code <b>E2558</b>	Project Name <b>ALFAGEN</b>					
							CLIENT				CLIENT dwg number -		Rev. -	Document Title <b>Basic Control System Configuration</b>			Scale <b>1:1</b>			
	<b>A</b>	<b>16/07/2025</b>	<b>INITIAL VERSION</b>			<b>RORI</b>	<b>RORI</b>	<b>RORI</b>						DESIGNED:	<b>MABLA</b>	DRAWN:	<b>MABLA</b>	APPROVED:	<b>RORI</b>	Format <b>A3</b>
	Rev.	Date	Revisions description			Designed	Draw	Approved						DATE:	<b>23/07/2025</b>	DATE:	<b>03/12/2025</b>	DATE:	<b>03/12/2025</b>	Sheet 9 OF x
	1	2	3	4	5	6	7	8	9	10	11	12								



The figure is a technical drawing of a strip casting area. The main title, "STRIP CASTING AREA 3322 LINE#02", is centered in the upper half of the drawing. The drawing is framed by a coordinate grid with columns labeled 1 through 12 and rows labeled A through H. The title block is located in the bottom right corner, containing project information such as Project Code (E2558), Project Name (ALFAGEN), and Document Title (Basic Control System Configuration). It also includes a revision table with columns for Revision (Rev.), Date, and Revisions description. The revision table shows a single revision (Rev. A) dated 16/07/2025, with the description "INITIAL VERSION". The drawing is signed by the contractor, insertec, and the client, RORI.

Rev.	Date	Revisions description	Designed	Draw	Approved
A	16/07/2025	INITIAL VERSION	RORI	RORI	RORI

CONTRACTOR: insertec Furnaces & Refractories

CLIENT: RORI

CONTRACTOR dwg number: 2558-0000-GEN-E-DWG-BNCD

CLIENT dwg number: -

Project Code: E2558

Project Name: ALFAGEN

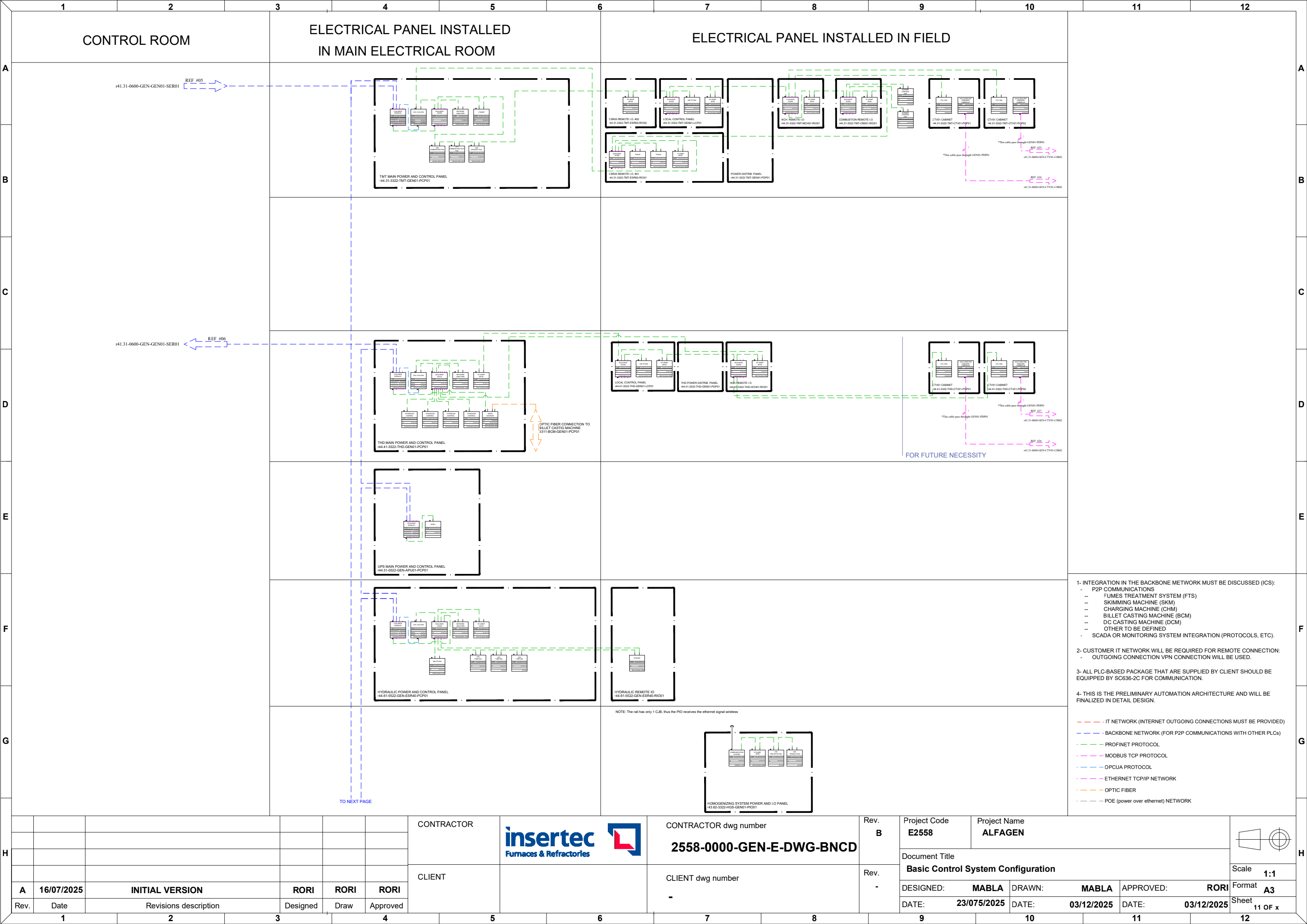
Document Title: Basic Control System Configuration

Scale: 1:1

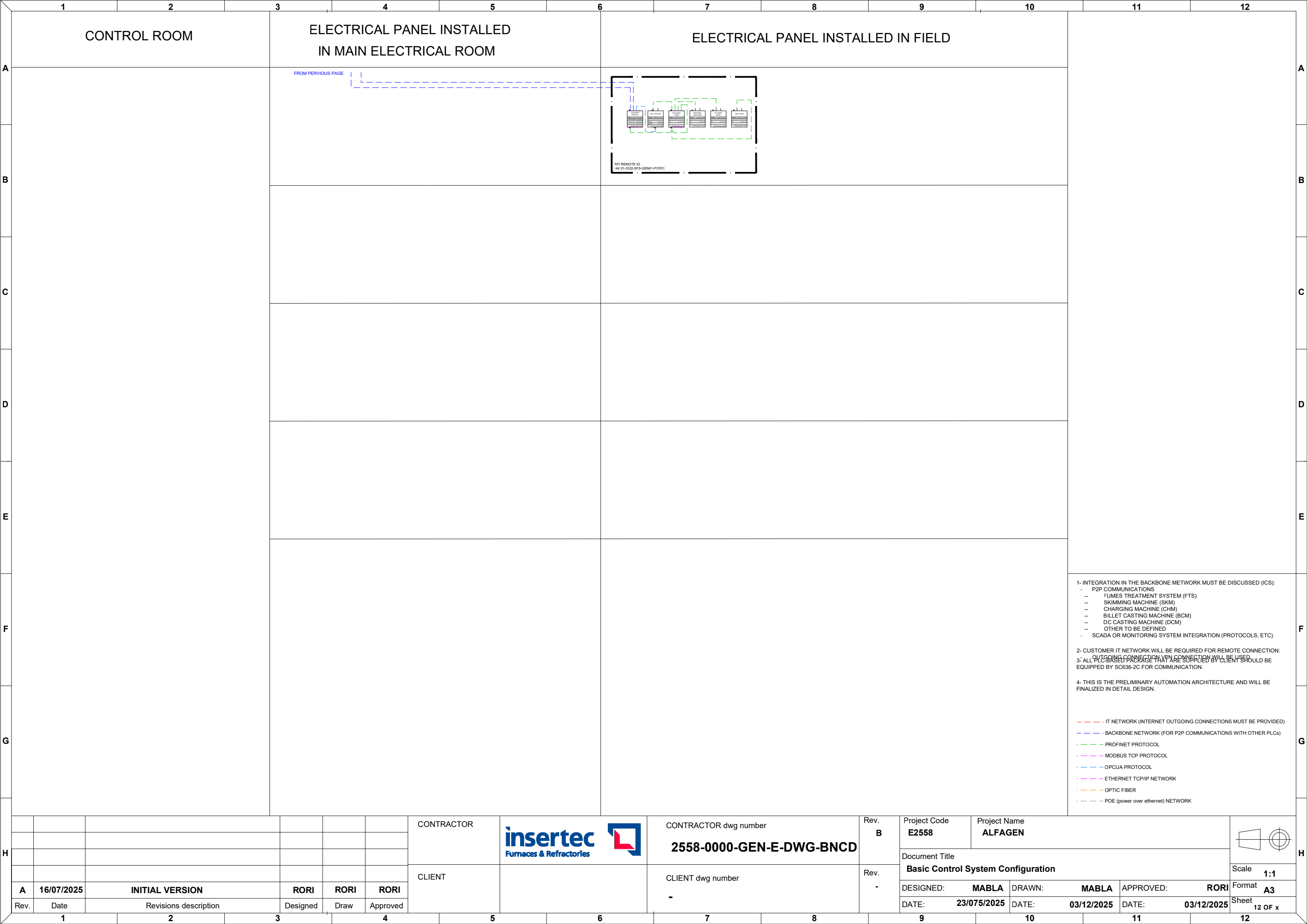
Format: A3

Sheet: 10 OF x











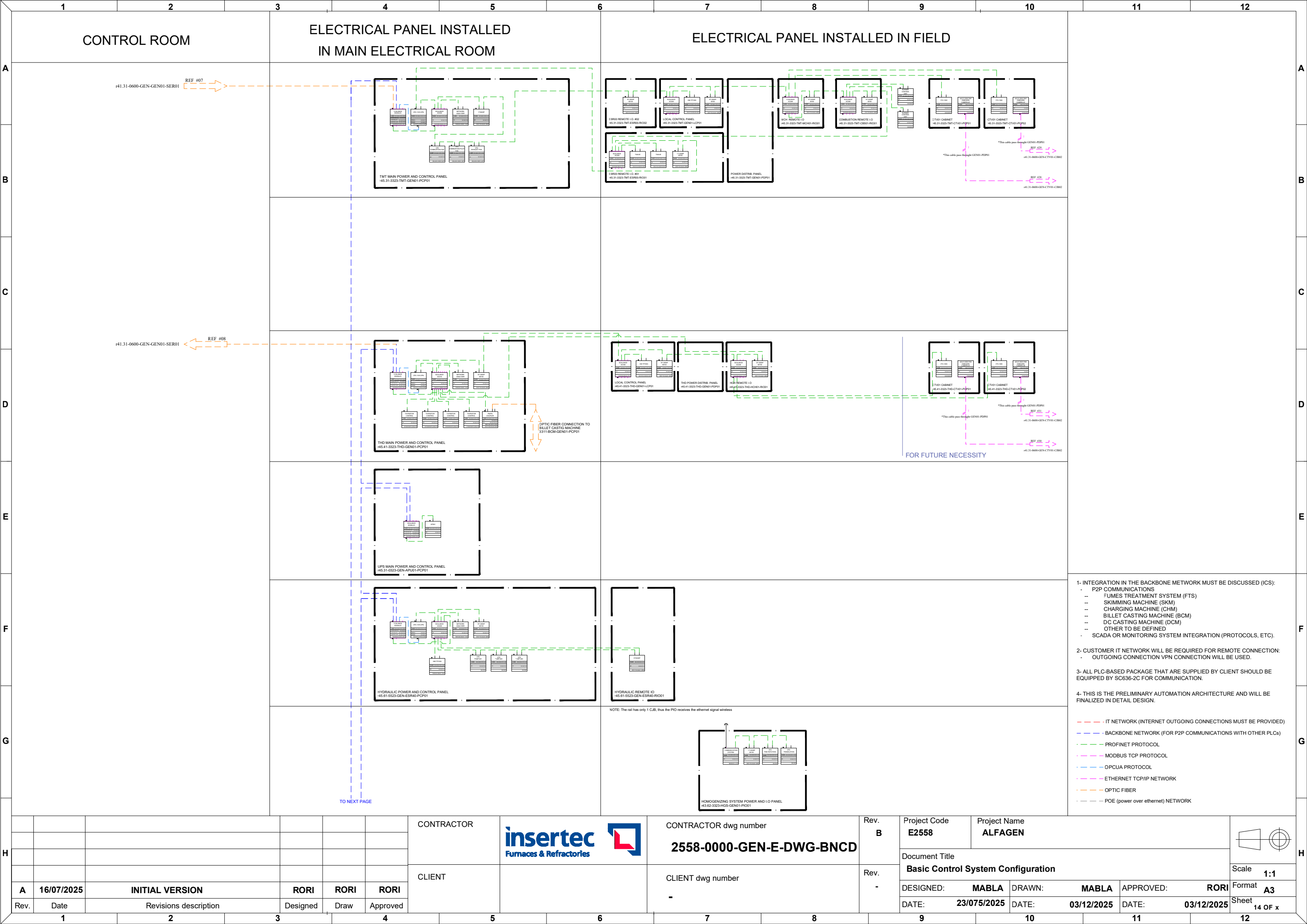
STRIP CASTING AREA  
3323 LINE#03

Rev.	Date	Revisions description	Designed	Draw	Approved
A	16/07/2025	INITIAL VERSION	RORI	RORI	RORI

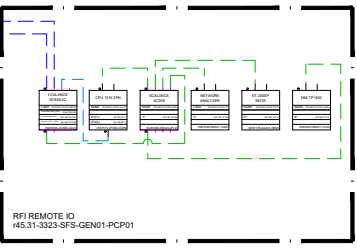
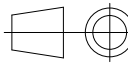
Rev.	Project Code	Project Name	Document Title	Scale	Format
B	E2558	ALFAGEN	Basic Control System Configuration	1:1	A3

Rev.	Project Code	Project Name	Document Title	Scale	Format
-	23/075/2025	03/12/2025	03/12/2025	13 OF x	







	1	2	3	4	5	6	7	8	9	10	11	12		
A	CONTROL ROOM			ELECTRICAL PANEL INSTALLED IN MAIN ELECTRICAL ROOM			ELECTRICAL PANEL INSTALLED IN FIELD						A	
B				<div>FROM PERVIOUS PAGE</div> 									B	
C													C	
D													D	
E													E	
F													1- INTEGRATION IN THE BACKBONE NETWORK MUST BE DISCUSSED (ICS): <ul style="list-style-type: none"><li>- P2P COMMUNICATIONS<ul style="list-style-type: none"><li>-- FUMES TREATMENT SYSTEM (FTS)</li><li>-- SKIMMING MACHINE (SKM)</li><li>-- CHARGING MACHINE (CHM)</li><li>-- BILLET CASTING MACHINE (BCM)</li><li>-- DC CASTING MACHINE (DCM)</li><li>-- OTHER TO BE DEFINED</li></ul></li><li>- SCADA OR MONITORING SYSTEM INTEGRATION (PROTOCOLS, ETC).</li></ul> 2- CUSTOMER IT NETWORK WILL BE REQUIRED FOR REMOTE CONNECTION: OUTGOING CONNECTION VPN CONNECTION WILL BE USED. 3- ALL PLC-BASED PACKAGE THAT ARE SUPPLIED BY CLIENT SHOULD BE EQUIPPED BY SC636-2C FOR COMMUNICATION. 4- THIS IS THE PRELIMINARY AUTOMATION ARCHITECTURE AND WILL BE FINALIZED IN DETAIL DESIGN.  <div><div>-- -- -- IT NETWORK (INTERNET OUTGOING CONNECTIONS MUST BE PROVIDED)</div><div>-- -- -- BACKBONE NETWORK (FOR P2P COMMUNICATIONS WITH OTHER PLCs)</div><div>-- -- -- PROFINET PROTOCOL</div><div>-- -- -- MODBUS TCP PROTOCOL</div><div>-- -- -- OPCUA PROTOCOL</div><div>-- -- -- ETHERNET TCP/IP NETWORK</div><div>-- -- -- OPTIC FIBER</div><div>-- -- -- POE (power over ethernet) NETWORK</div></div>	
G	G													
H							CONTRACTOR dwg number <b>2558-0000-GEN-E-DWG-BNCD</b>		Rev. B	Project Code <b>E2558</b>	Project Name <b>ALFAGEN</b>			H
							CLIENT dwg number -			Rev. -	Document Title <b>Basic Control System Configuration</b>			Scale <b>1:1</b>
									DESIGNED: <b>MABLA</b>		DRAWN: <b>MABLA</b>	APPROVED: <b>RORI</b>	Format <b>A3</b>	
	Rev.	Date	Revisions description			Designed	Draw	Approved			DATE: <b>23/07/2025</b>	DATE: <b>03/12/2025</b>	DATE: <b>03/12/2025</b>	Sheet 15 OF x
	1	2	3	4	5	6	7	8	9	10	11	12		



The figure is a technical drawing of a strip casting area. The main title, "STRIP CASTING AREA 3324 LINE#04", is centered in the upper half of the drawing. The drawing is framed by a coordinate grid with columns labeled 1 through 12 and rows labeled A through H. The title block is located in the bottom right corner, containing project information such as Project Code (E2558), Project Name (ALFAGEN), and Document Title (Basic Control System Configuration). It also includes a revision table with columns for Rev., Date, and Revisions description, and a section for the contractor (insertec) and client information. The drawing area is mostly blank, with the title text being the primary content.

Rev.	Date	Revisions description	Designed	Draw	Approved
A	16/07/2025	INITIAL VERSION	RORI	RORI	RORI

Rev.	Project Code	Project Name	Document Title	Scale	Format
B	E2558	ALFAGEN	Basic Control System Configuration	1:1	A3

CONTRACTOR dwg number: 2558-0000-GEN-E-DWG-BNCD

CLIENT dwg number: -

CONTRACTOR: insertec Furnaces & Refractories

CLIENT: -

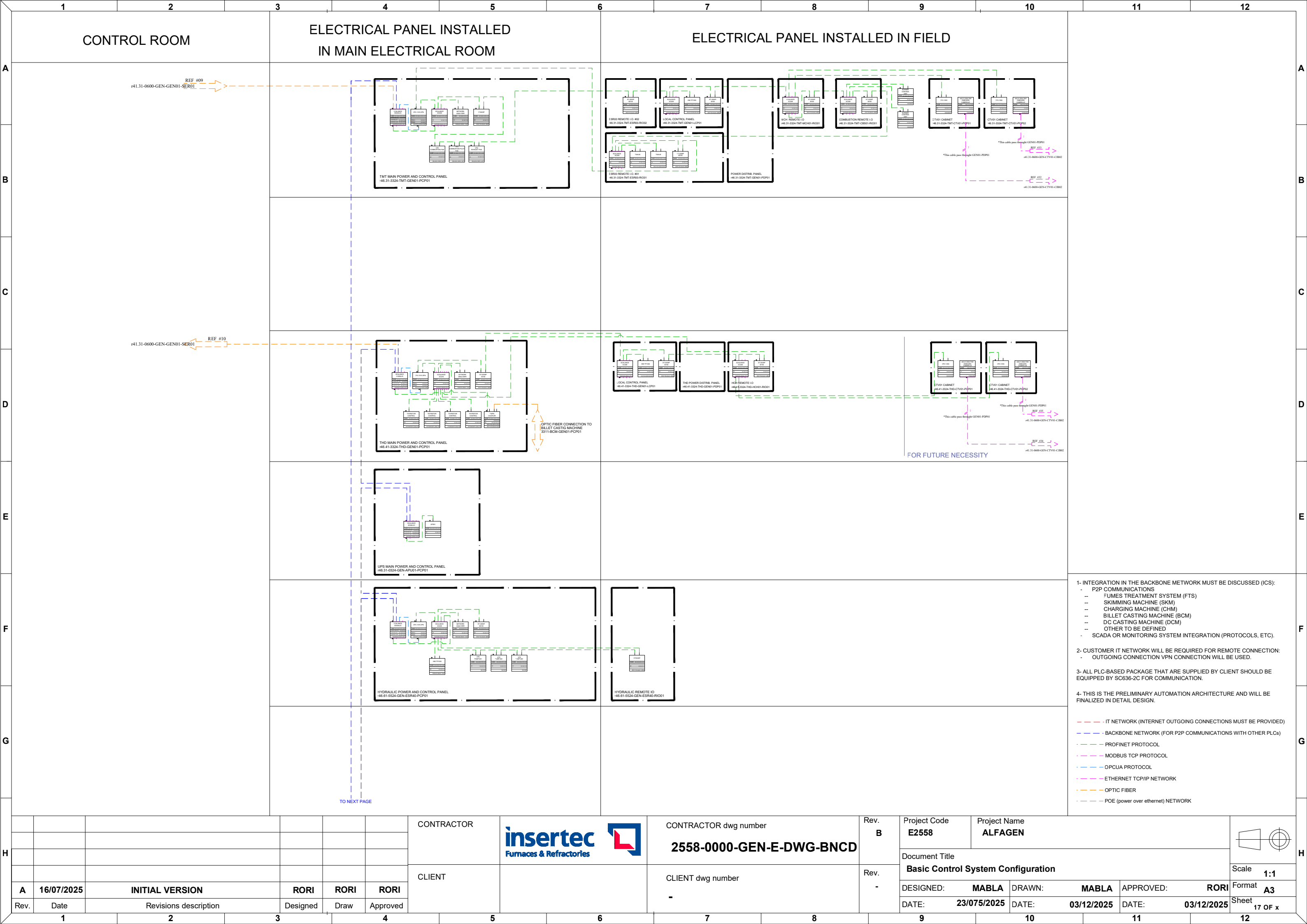
DATE: 23/07/2025

DATE: 03/12/2025

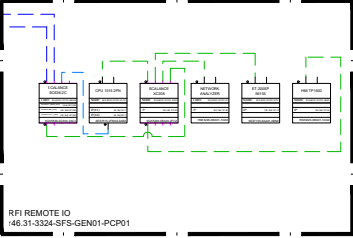

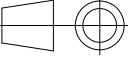
DATE: 03/12/2025

Sheet 16 OF x





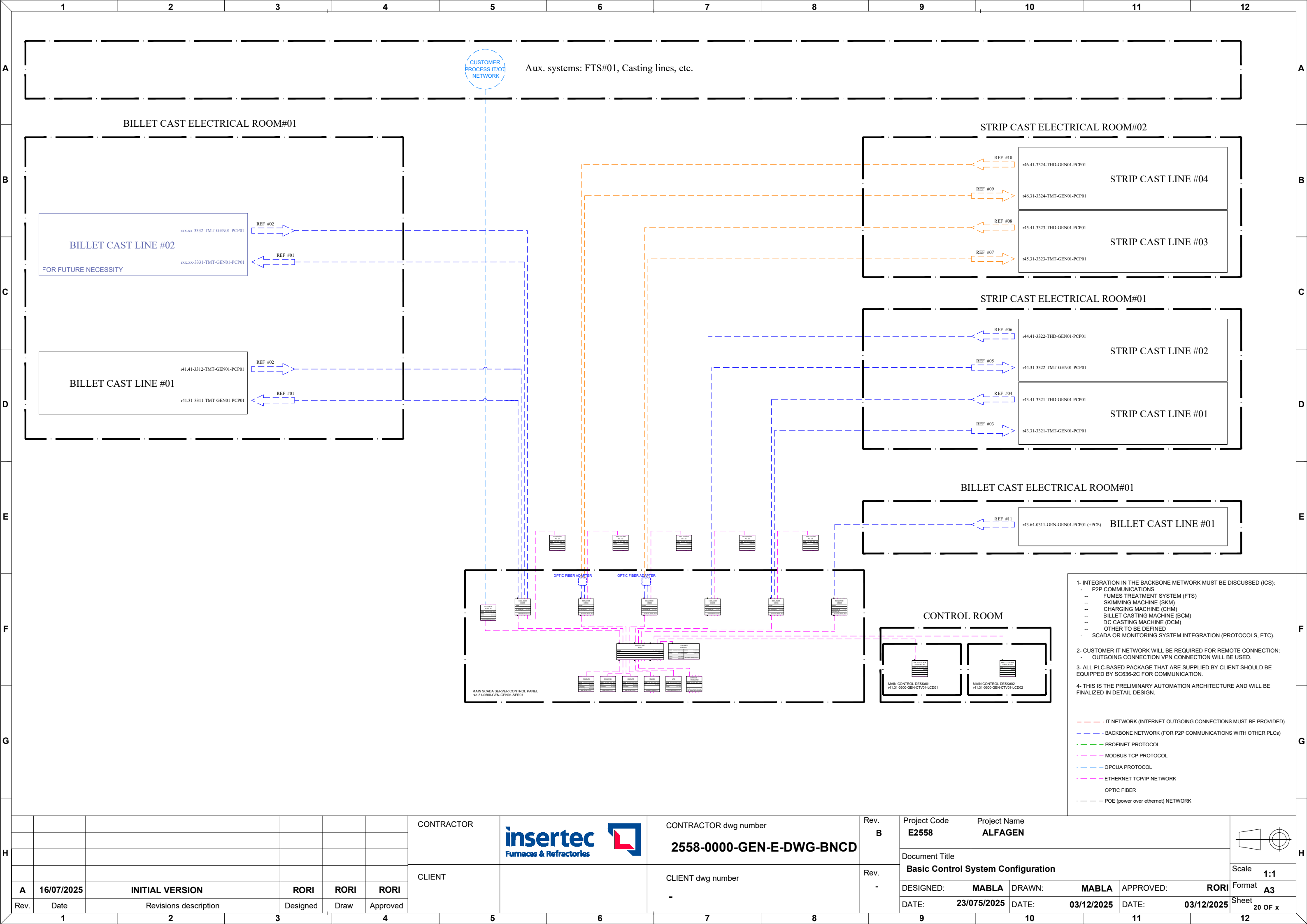


		1	2		3		4	5		6		7		8		9		10		11		12															
		CONTROL ROOM			ELECTRICAL PANEL INSTALLED IN MAIN ELECTRICAL ROOM				ELECTRICAL PANEL INSTALLED IN FIELD																												
A								<div>FROM PERVIOUS PAGE</div> <div></div>																													
B																																					
C																																					
D																																					
E																																					
F																																					
G																																					
H							CONTRACTOR				CONTRACTOR dwg number		Rev.	Project Code	Project Name																						
											2558-0000-GEN-E-DWG-BNCD		B	E2558	ALFAGEN																						
														Document Title								Scale															
							CLIENT							Basic Control System Configuration								1:1															
A	16/07/2025	INITIAL VERSION				RORI	RORI	RORI						DESIGNED:	MABLA	DRAWN:	MABLA	APPROVED:	RORI	Format		A3															
Rev.	Date	Revisions description				Designed	Draw	Approved						DATE:	23/07/2025	DATE:	03/12/2025	DATE:	03/12/2025	Sheet		18 OF x															
	1	2		3	4		5		6		7		8		9		10		11		12																







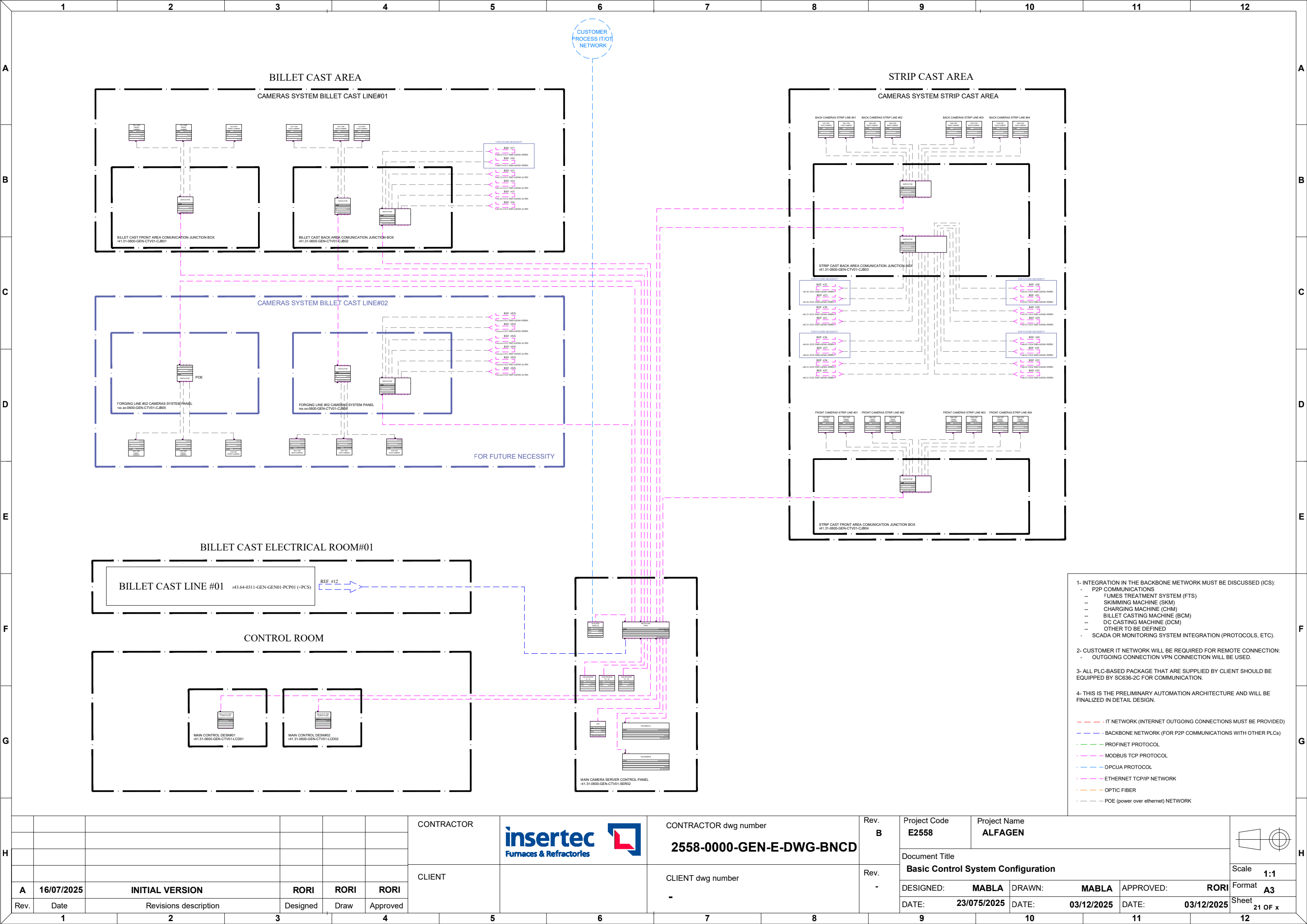






A	16/07/2025	INITIAL VERSION	RORI	RORI	RORI
Rev.	Date	Revisions description	Designed	Draw	Approved

CONTRACTOR		CONTRACTOR dwg number	Rev. B	Project Code E2558	Project Name ALFAGEN			
		2558-0000-GEN-E-DWG-BNCD		Document Title Basic Control System Configuration				
CLIENT		CLIENT dwg number	Rev. -				Scale 1:1	
		-		DESIGNED: MABLA	DRAWN: MABLA	APPROVED: RORI	Format A3	
				DATE: 23/07/2025	DATE: 03/12/2025	DATE: 03/12/2025	Sheet 20 OF x	





A	16/07/2025	INITIAL VERSION	RORI	RORI	RORI
Rev.	Date	Revisions description	Designed	Draw	Approved

CONTRACTOR	<div></div>	CONTRACTOR dwg number <b>2558-0000-GEN-E-DWG-BNCD</b>	Rev. <b>B</b>	Project Code <b>E2558</b>	Project Name <b>ALFAGEN</b>				
CLIENT		CLIENT dwg number <b>-</b>	Rev. <b>-</b>	Document Title <b>Basic Control System Configuration</b>					Scale <b>1:1</b>
				DESIGNED: <b>MABLA</b>	DRAWN: <b>MABLA</b>	APPROVED: <b>RORI</b>		Format <b>A3</b>	
				DATE: <b>23/07/2025</b>	DATE: <b>03/12/2025</b>	DATE: <b>03/12/2025</b>	Sheet <b>21 OF x</b>		